

The latest LiveAction 4.1 release combines LiveAction exclusive end-to-end network visualization and NetLD sophisticated NCCM functionality to provide customers with easy configuration and change management for large scale networks. LiveAction-NetLD integration expands LiveAction unique visualization and graphical troubleshooting to change automation, network compliance, and other configuration management capabilities, enabling operational efficiency and faster problem resolution.

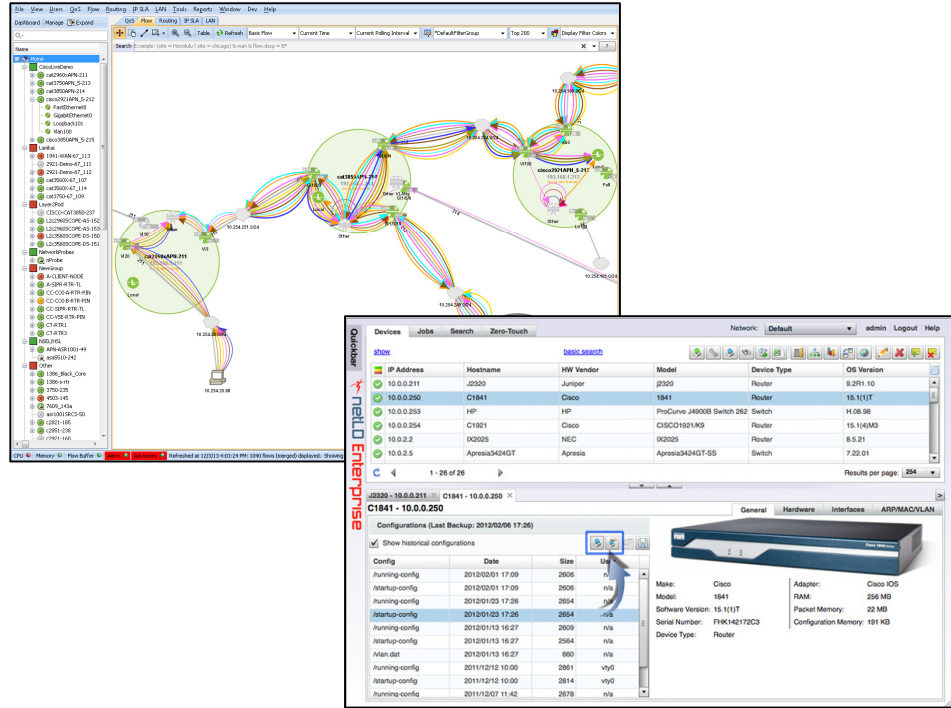
Previously, LiveAction QoS graphical configurator allows customers to build and push QoS policies to multiple devices and interfaces on-demand. Yet these changes are for QoS configurations only. Generic template based configurations to a large number of devices were not available. With NetLD integration, LiveAction customers can now build and deploy any template-based configurations to groups of devices, simply and easily. In addition, NetLD full NCCM functions allow LiveAction customers to get more comprehensive change management support for their infrastructure.

Key Customer Benefits

- **Integrated** – Launch NetLD directly from LiveAction server portal
- **Large-scale** – Visualize tens of thousands of devices and easily push configuration changes to them
- **Support Multi-vendor configuration** – Over 60 multi-vendor device types such as Alcatel, Brocade, Cisco, CheckPoint, F5, Foundry, Juniper, HP, NEC, Nortel, Palo Alto, and more
- **Reduce network downtime** – Keep track of changes, reduce human errors and deploy configurations faster
- **Increased Productivity** – Accelerated troubleshooting and resolution with combined visualization, end-to-end flows, real-time and historical reporting, bulk configuration, scheduled discovery, full hardware and software device inventory, and device OS upgrade

Key Features

- **Configuration Management**
 - o Scalable to 20,000+ devices
 - o Historical configuration and change reports
 - o Compliance rule engine
 - o Bulk configuration
 - o Scheduled and real time backup and restore



LiveAction-NetLD: Simplifying Network Changes

- **Change Management**
 - o Scheduled and on-demand network wide changes
 - o Abstracted multi-vendor change deployment
 - o IOS software distribution
 - o Compliance Check
 - o Smart Change
- **Inventory Management**
 - o Scheduled and automatic discovery process
 - o Hardware Inventory (chassis, Slot, Card, SN, FRU PN, Rev. number, Power Supply information)
 - o Device OS Upgrades

NCCM Device Support <http://www.logicvein.com/product/device.html>

Act Now! Get your free trial today. LiveAction is an IVT certified Cisco Solution Partner. To find out more information, visit www.liveaction.com and www.logicvein.com. To request a meeting contact us at sales@liveaction.com or call 1-888-881-1116.

Copyright © 2016 LiveAction, Inc. All rights reserved. LiveAction, the LiveAction logo and LiveAction Software are trademarks of LiveAction, Inc. Other company and product names are the trademarks of their respective companies.

